



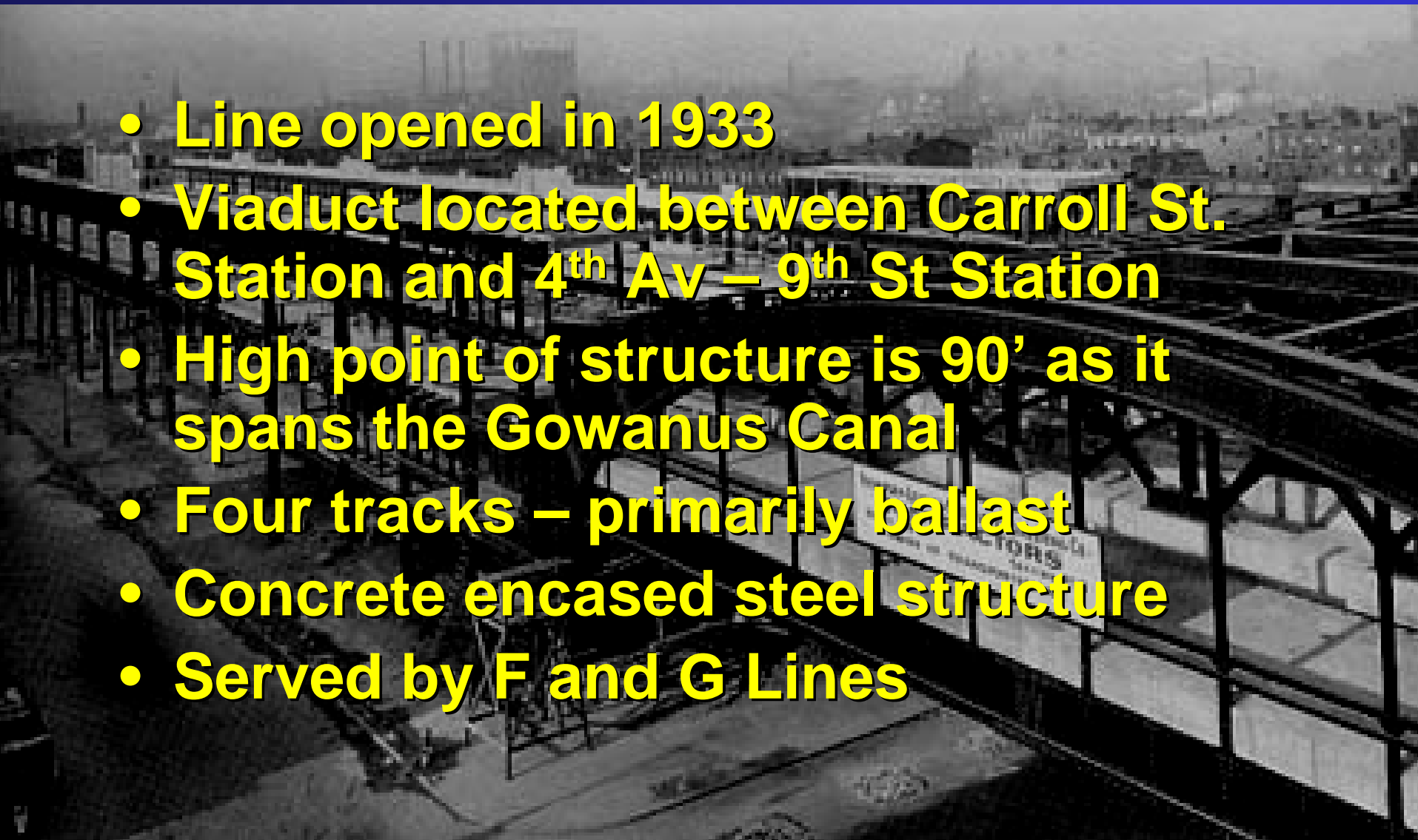
New York City Transit

CULVER LINE REHABILITATION

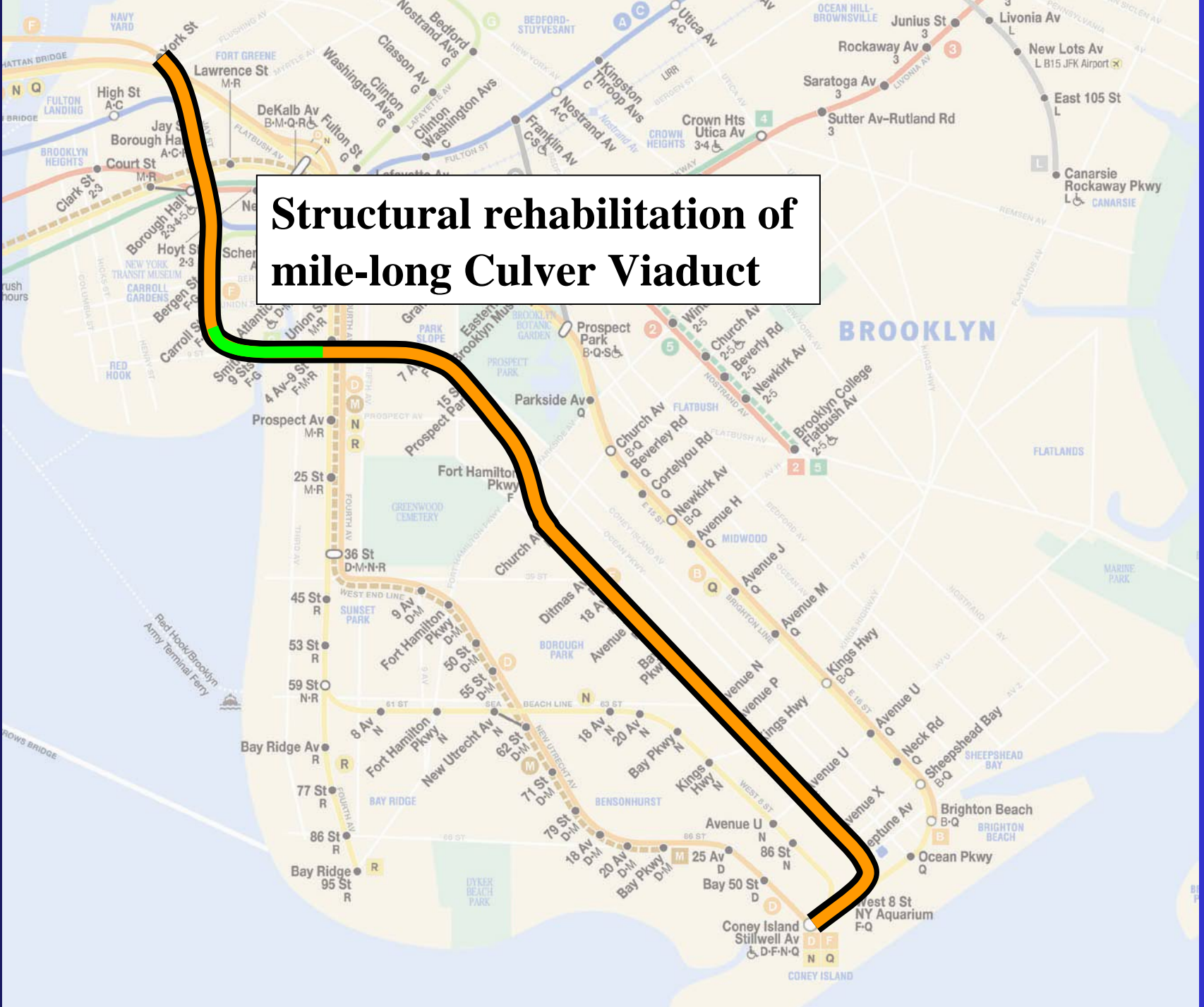
**PRESENTATION TO COMMUNITY BOARD 6
TRANSPORTATION COMMITTEE
NOVEMBER 15, 2007**

Culver Line Background

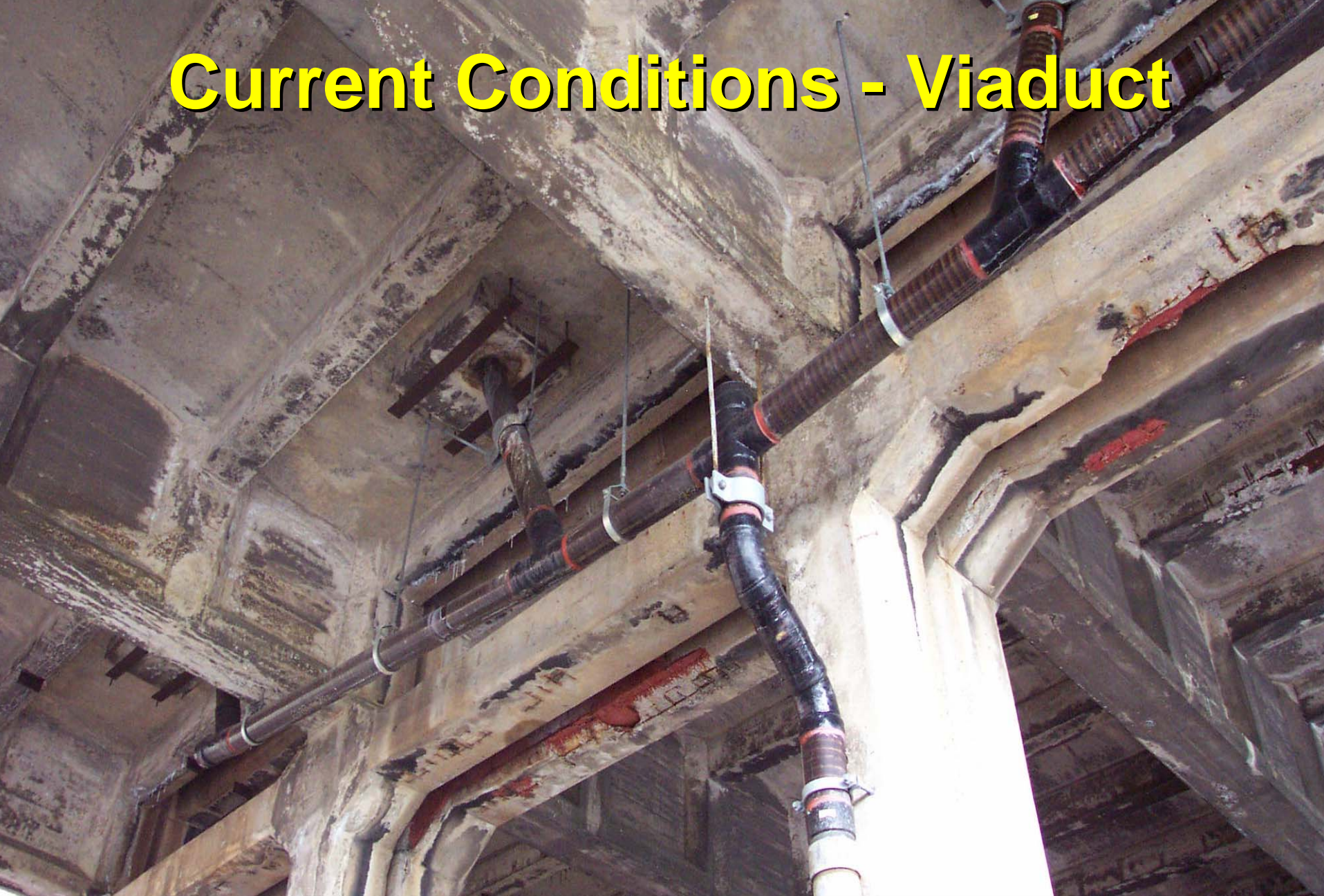
- Line opened in 1933
- Viaduct located between Carroll St. Station and 4th Av – 9th St Station
- High point of structure is 90' as it spans the Gowanus Canal
- Four tracks – primarily ballast
- Concrete encased steel structure
- Served by F and G Lines



Structural rehabilitation of mile-long Culver Viaduct



Current Conditions - Viaduct



Failed deck waterproofing - Concrete spalling and exposed steel



Wrapped Structure



Elevation View

Current Conditions - Viaduct



At Smith – 9th St. Station



4 Track Railroad

Current Conditions - Signals



4th Avenue Interlocking



Similar Work: Ocean Pkwy. Station



Similar Work: Ocean Pkwy. Station



Similar Work: Ocean Pkwy. Station



Installation of Deck Slab at Ocean Pkwy.



Installation of Deck Waterproofing at Ocean Pkwy. Station



Installation of New Low-Vibration Track at Ocean Pkwy. Station



**Similar Work: Flushing Line
New Switches**



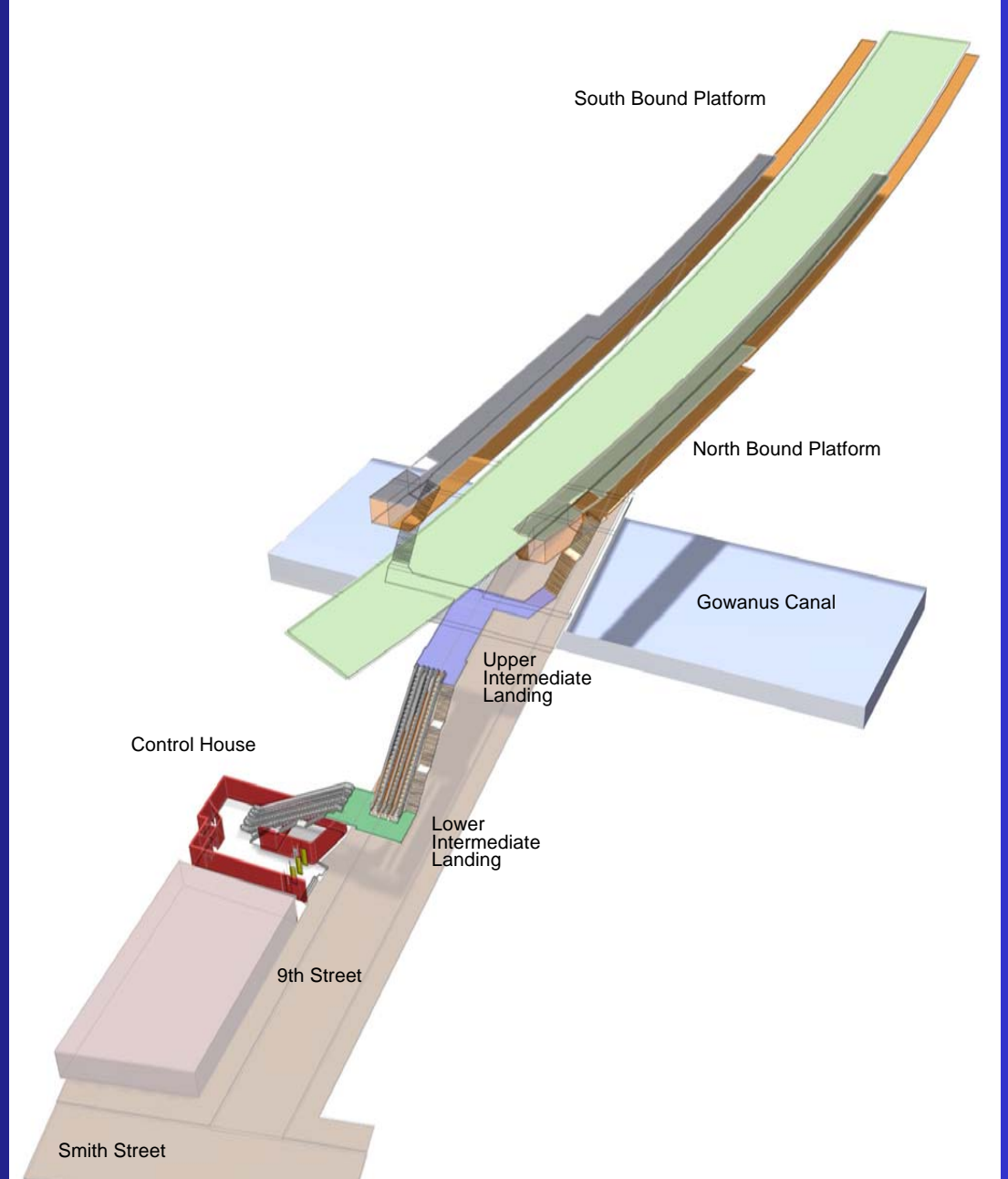
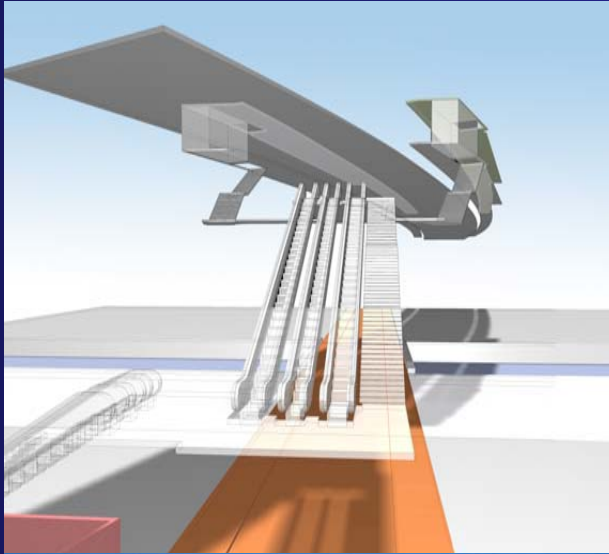
**Similar Work: Flushing Line
New Switches**

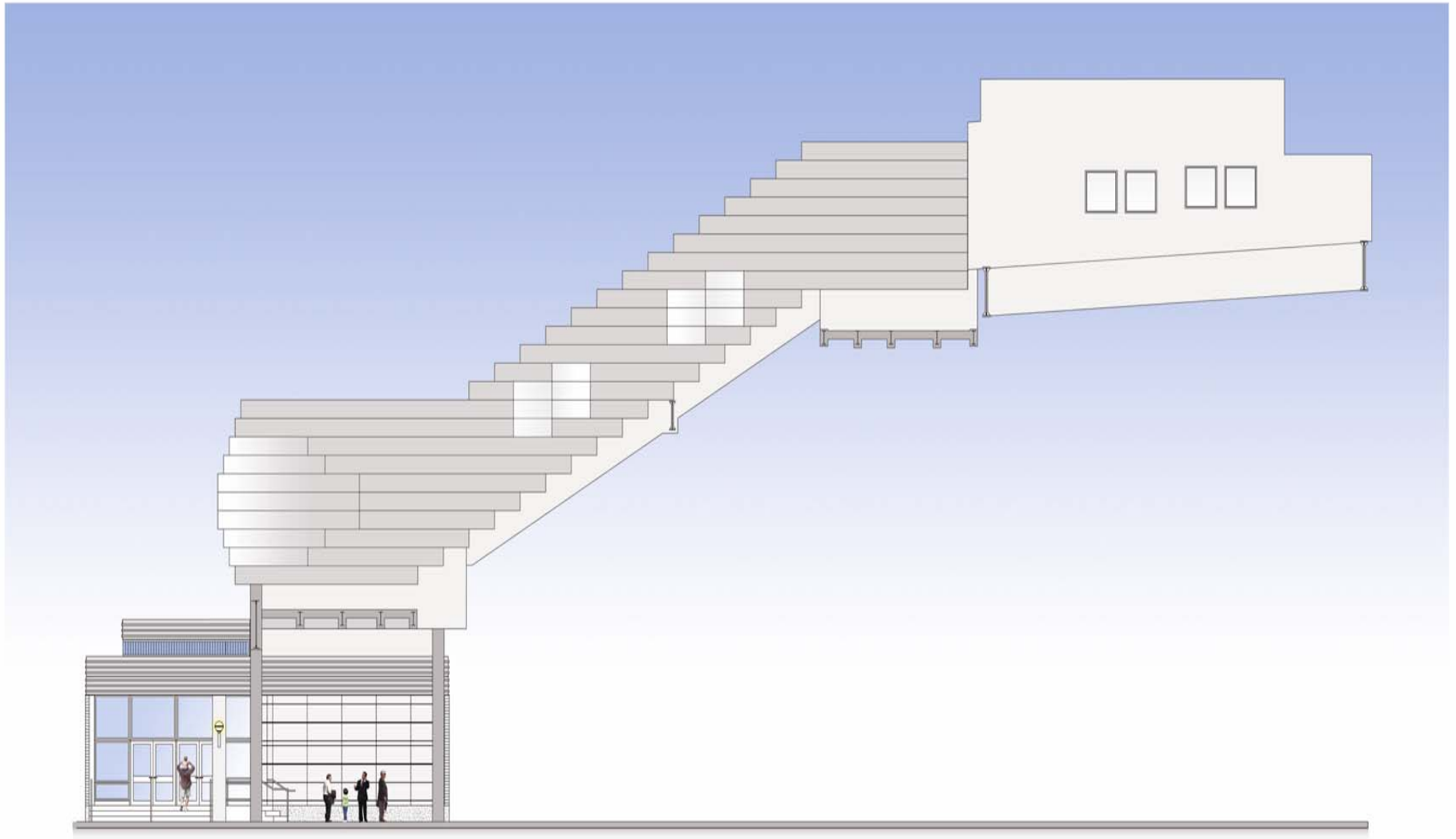


Canopy at Smith – 9th Sts. Station

Smith-9th St Station

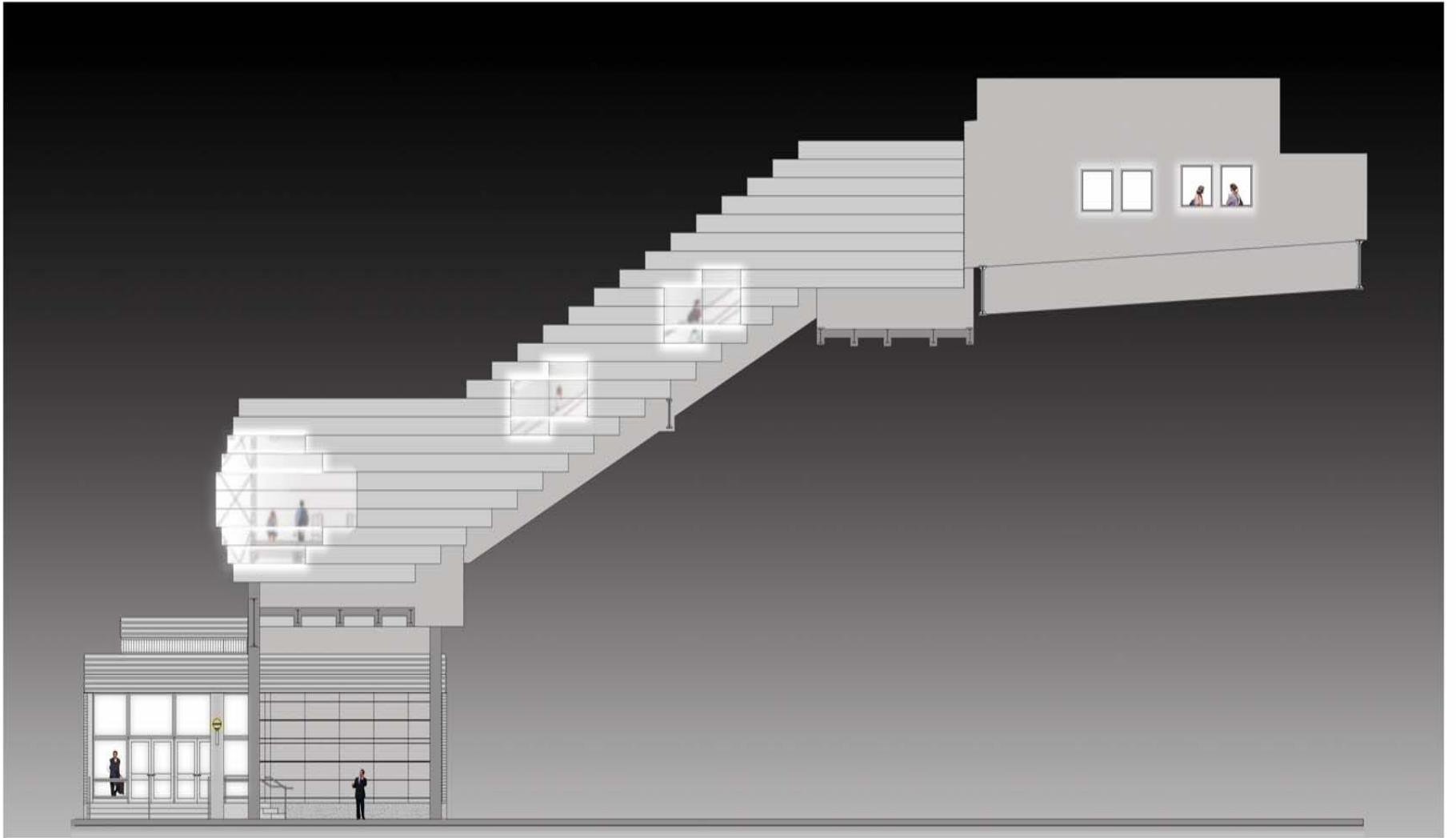
Station Overview





n.t.s.

South Elevation-Day View



n.l.s.

South Elevation-Night View



4 Avenue

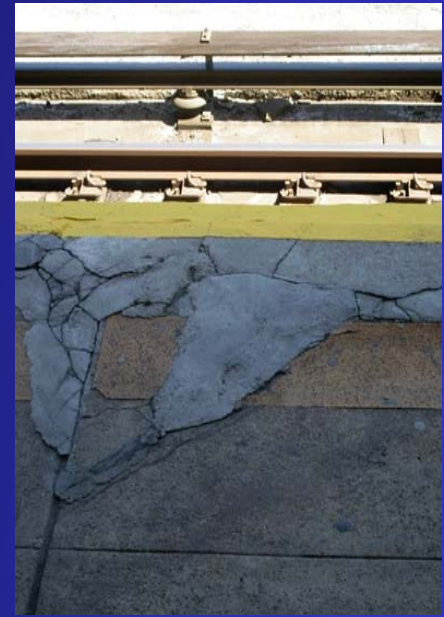


4th Av. – 9th St. Station



Existing Exterior Elevation

4th Avenue Station



Existing Platform



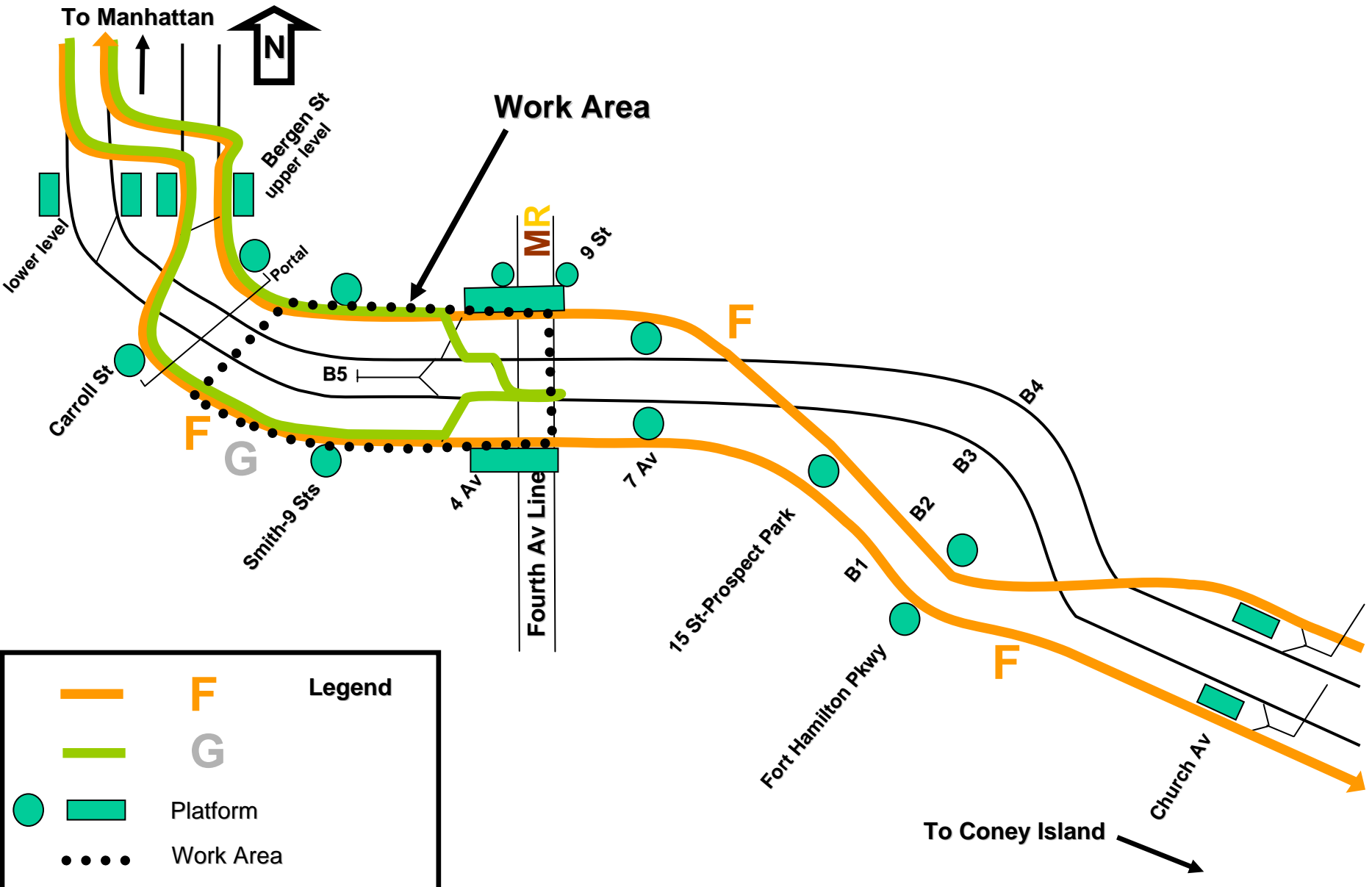


Proposed Restoration





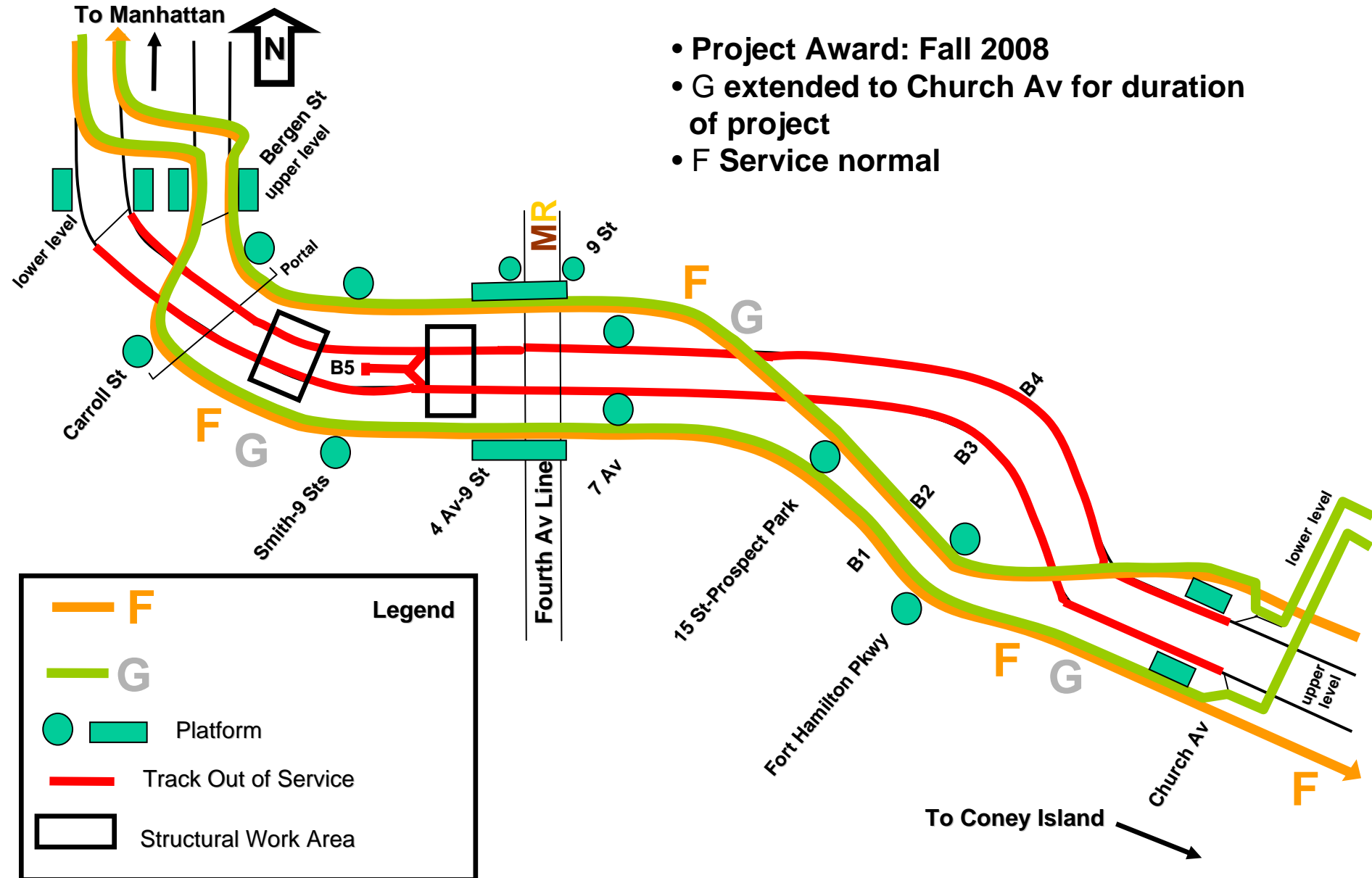
Culver Viaduct Existing Service



Culver Viaduct Phase 1

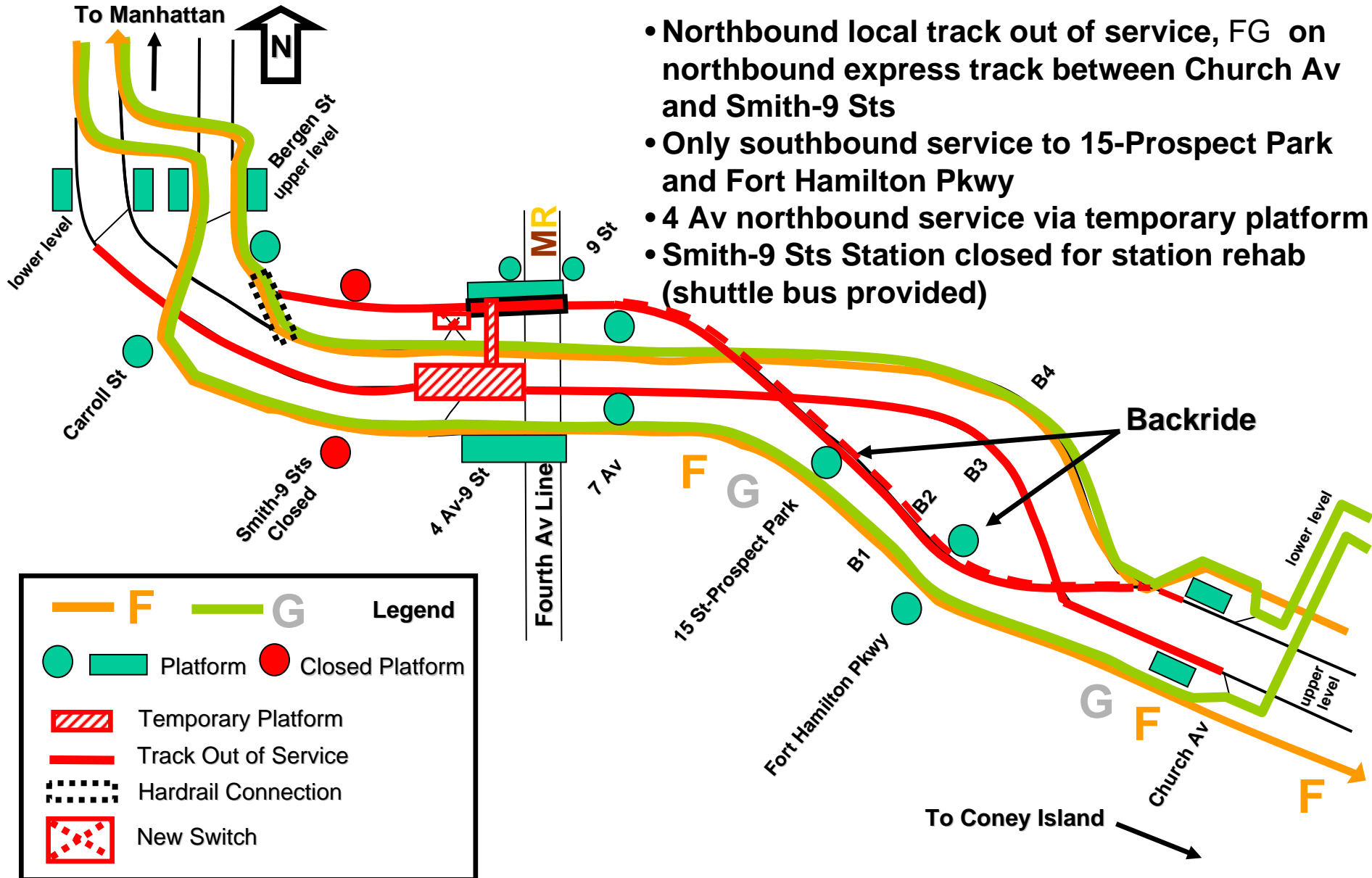
Approx. 15 Months

- Project Award: Fall 2008
- G extended to Church Av for duration of project
- F Service normal



Culver Viaduct Phase 2A

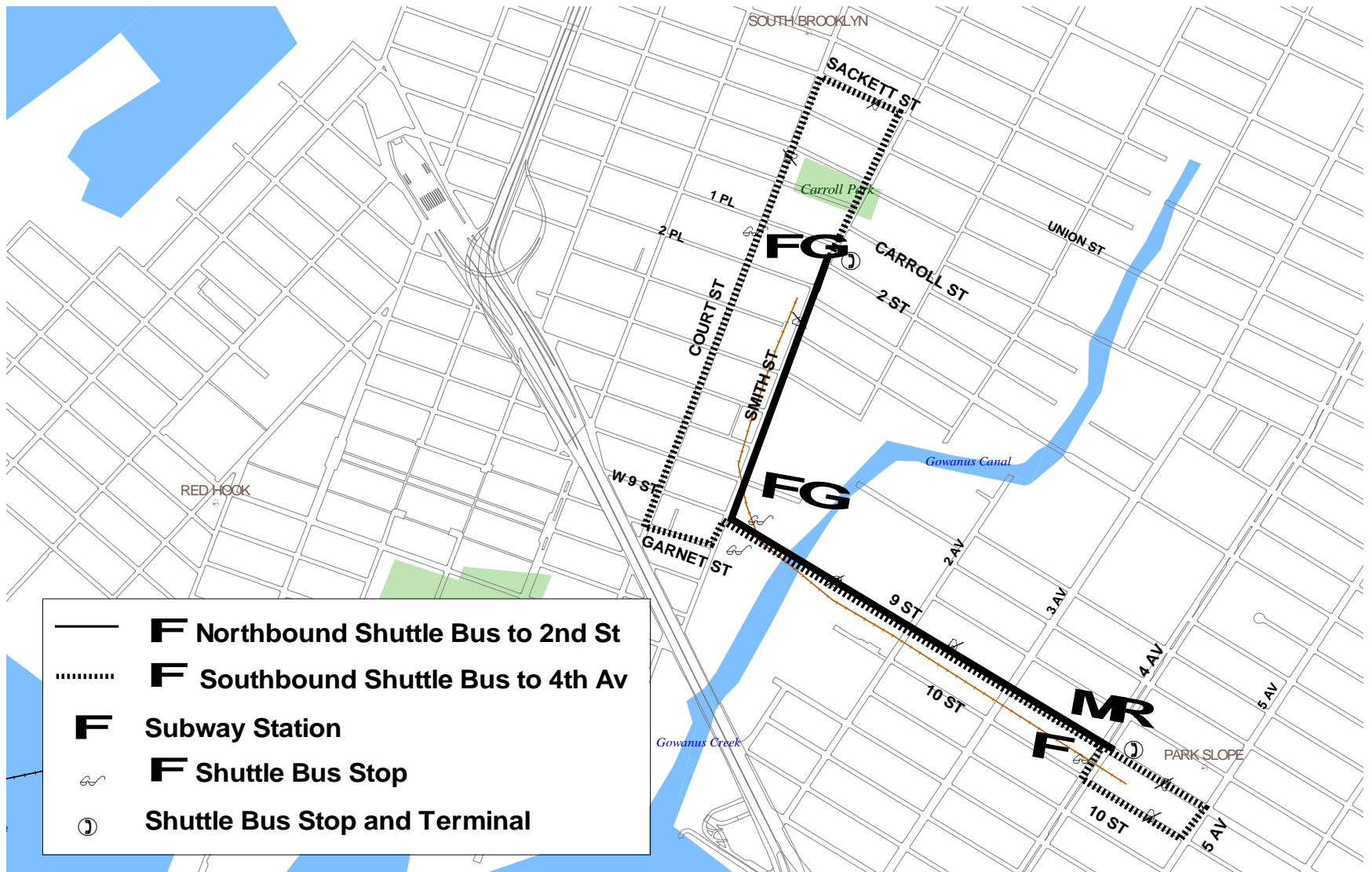
Approx. 4 Months



- Northbound local track out of service, FG on northbound express track between Church Av and Smith-9 Sts
- Only southbound service to 15-Prospect Park and Fort Hamilton Pkwy
- 4 Av northbound service via temporary platform
- Smith-9 Sts Station closed for station rehab (shuttle bus provided)

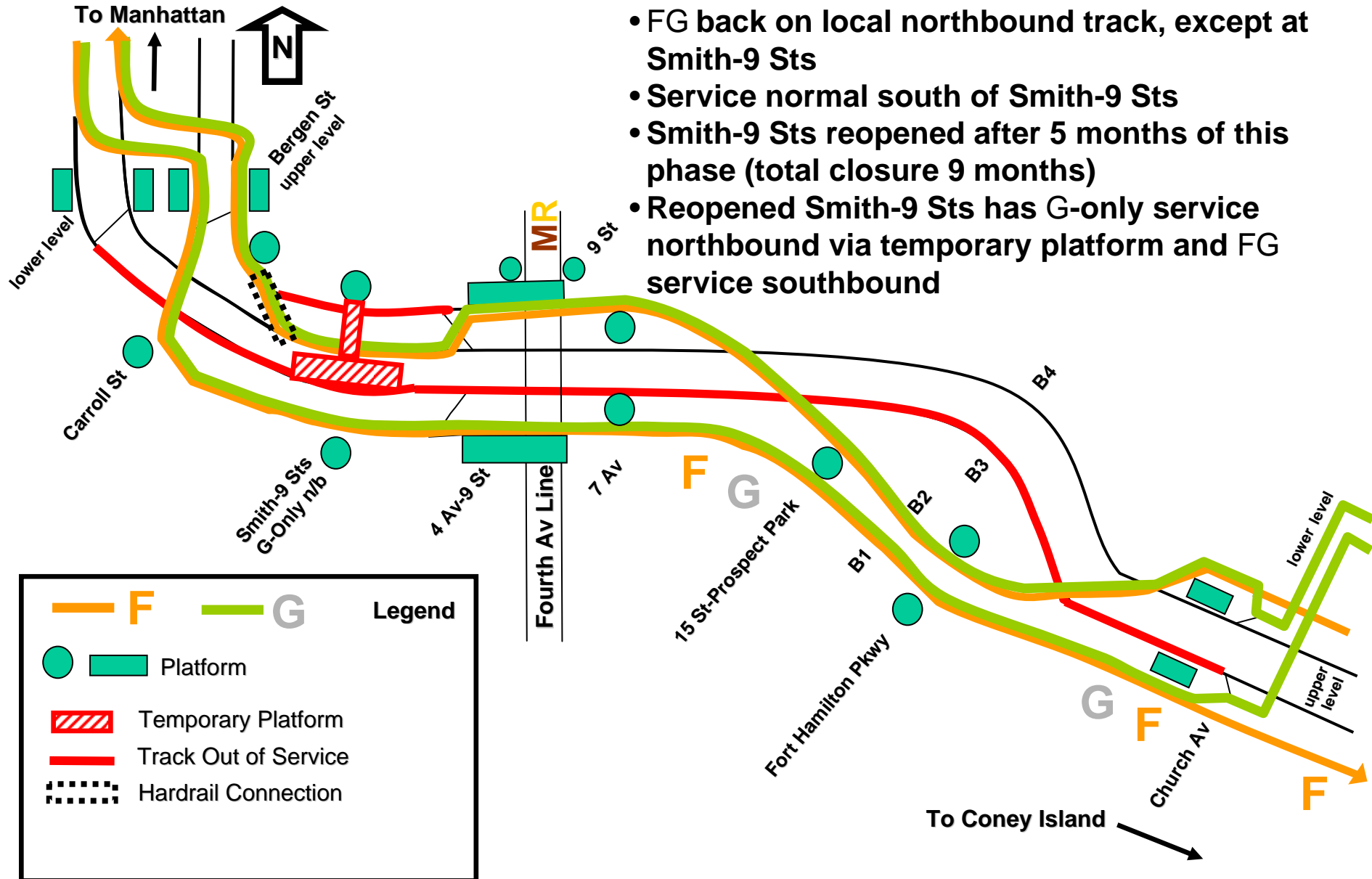
Smith-9 Sts Station Rehabilitation

Shuttle Bus During Station Closure



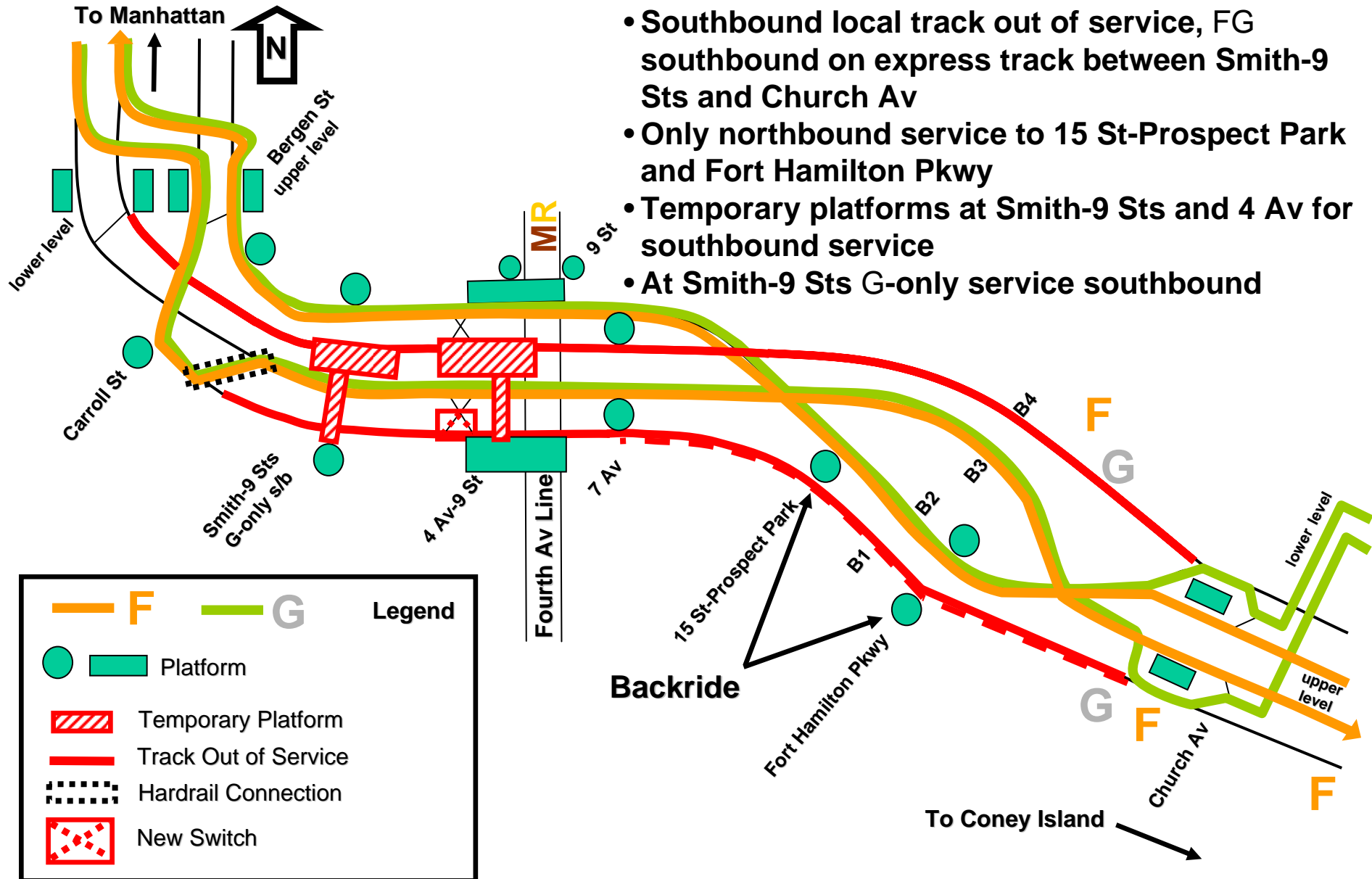
Culver Viaduct Phase 2B

Approx. 8 Months



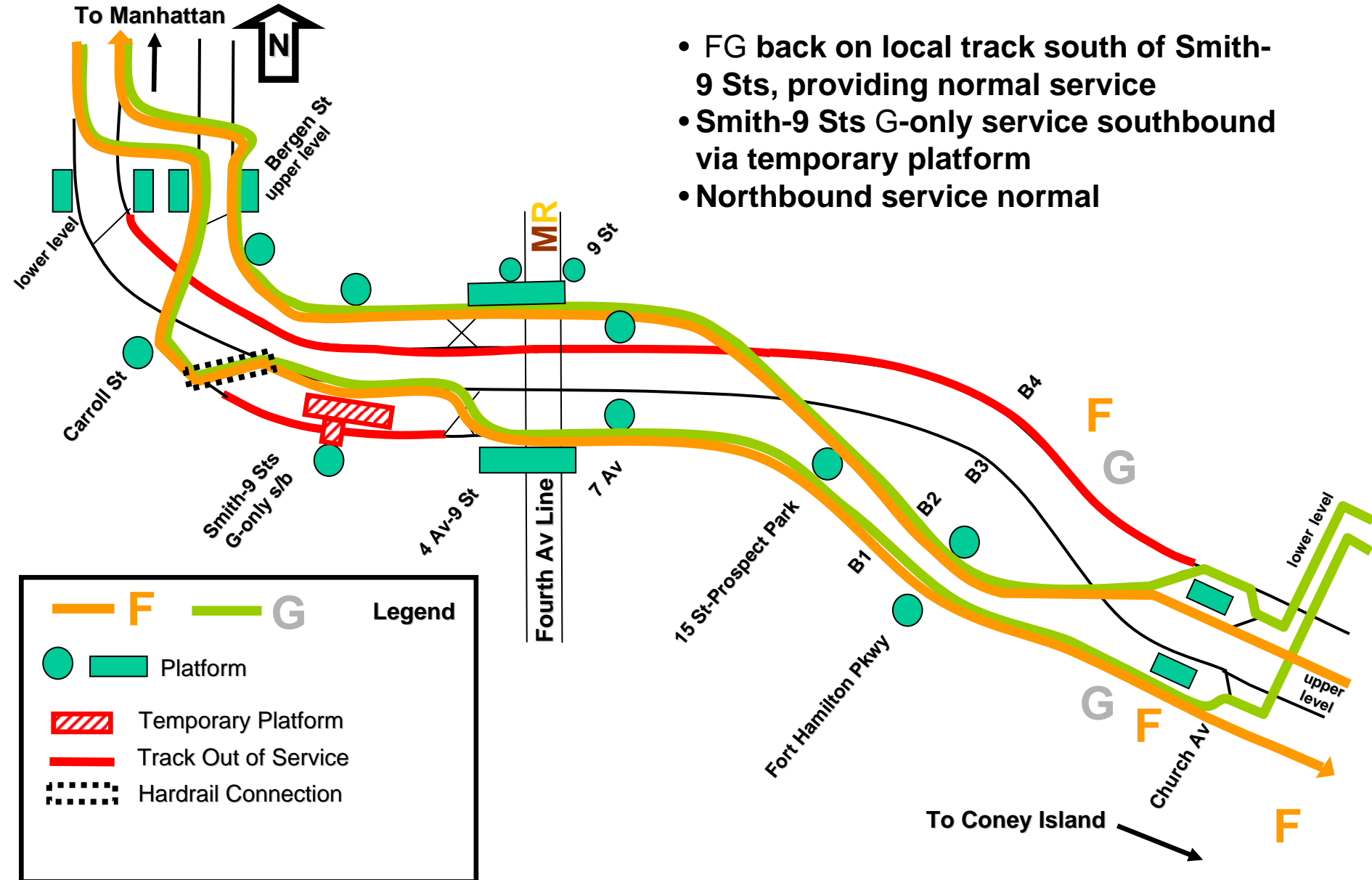
Culver Viaduct Phase 3A

Approx. 5 Months



Culver Viaduct Phase 3B

Approx. 10 Months



Culver Viaduct Phase 4

3 Months

